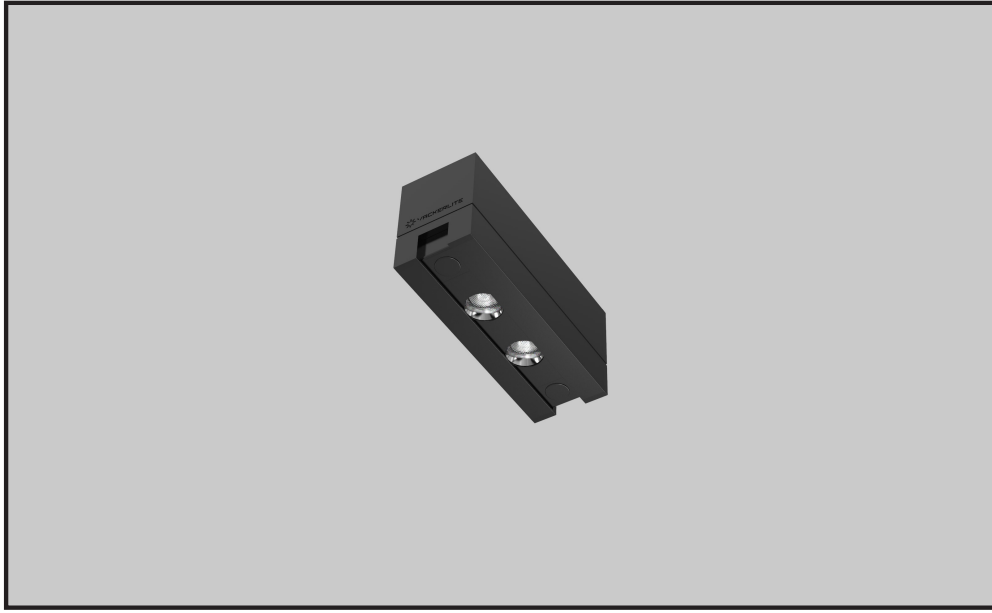


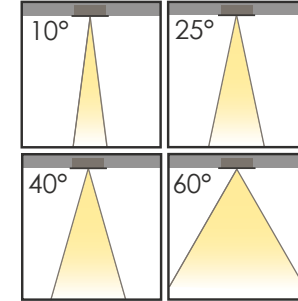
# POLEN-2 S

LED A A+ A++



FIXED

CRI>80



IP20

F

CLASS I

CLASS I

220-240V AC



RAL Code

Extruded aluminium body with electrostatic powder coated,  
Injection cover with electrostatic powder coated,  
High efficiency acrylic lens,  
Effective thermal design,  
50.000 hours Led lifetime,  
Narrow, medium and wide beam angle options,  
Please inquire for optional power values.

*Elektrostatik toz boyalı alüminyum ekstrüzyon gövde,  
Elektrostatik toz boyalı enjeksiyon kapak,  
Yüksek verimli akrilik lens,  
Etkili termal tasarım,  
50.000 saat Led yaşam ömrü,  
Dar, orta ve geniş açı seçenekleri,  
Opsiyonel güç değerleri için bizimle iletişime geçebilirsiniz.*

**Consuming Power** 2.7W 3.7W 5.2W  
**Tüketim Gücü**

**Light Source** HP LED  
**Işık Kaynağı**

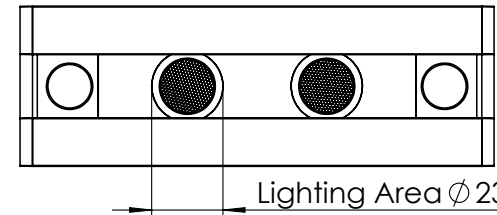
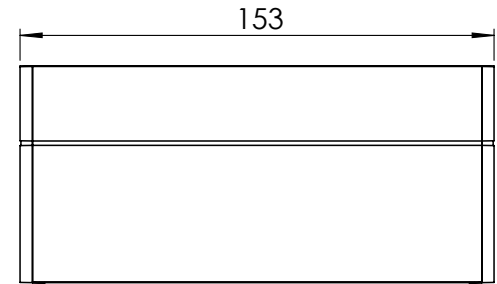
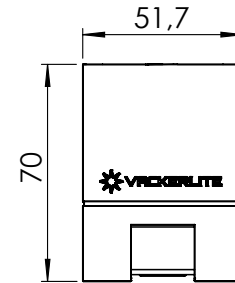
**Color Temperature** 2700K 5000K  
**Renk Sıcaklığı** 3000K 6500K  
4000K

**Luminaire Output Lumen\*** 249 lm 341 lm 479 lm  
**Armatür Çıkış Akısı**

**Efficiency** 92 lm/W  
**Verimlilik**

**Power Factor** Pf>90  
**Güç Faktörü**

**Weight** 0.39 kg  
**Ağırlık**



\* Lümen değeri 2700K değerine göre verilmiştir.  
Lumen value is given according to 2700K value.